

RITECASE

CAISSONS - FORMWORK

PVC & PE Spiral Wound Formwork and Caisson Product Guide

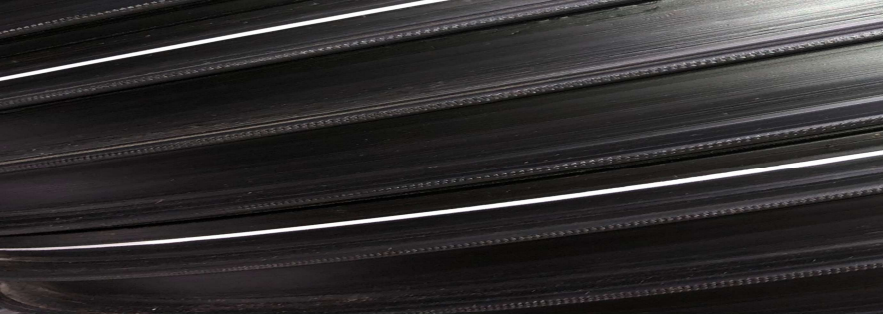


18 Cormack Rd
Wingfield SA 5013

PH: 0407427191
ABN: 23 630 636 725

ritecase.com.au





Ritecase column formwork caissons and soakwells are versatile and efficient, made from locally sourced high-grade Polyvinyl chloride (PVC) or high-density UV stabilised Polyethylene (HDPE). The lightweight, strong, and economical column form that can be manufactured to a large range of custom lengths and diameter as required. Our diameters range from as low as 230mm up to 1050mm with an option to source up to 2000mm depending on requirements and material used.

- Manufactured in South Australia
- Made to Order
- PVC & HDPE Solutions
- Industry proven robust and safe

Product Features - uPVC

- Strong and waterproof
- Lightweight and easy to handle.
- Made to order lengths reduce wastage (cost) and time on site as we can produce exact sizing.
- Unlike other formwork there are no razor-sharp edges improving safety.
- Ease of stripping for above ground applications or leave in ground.
- Can be used in acidic/caustic soils.
- Corrosion and abrasion resistant
- Robust construction: waterproof and durable against knocks and on-site conditions.
- Our customers often comment on the superiority of our product compared to other inferior alternatives.

Product Features – HDPE

- Strong and waterproof
- UV stabilised high density polyethylene (HDPE).
- Can be used in acidic/caustic soils.
- Corrosion and abrasion resistant
- No razor-sharp edges improving safety.
- Spiral Wound and welded pipe wall.
- Lightweight and easy to handle.
- Long life durable in situ product.
- Robust construction: waterproof and durable against knocks and on-site conditions.
- Standardised product made to SAPN specifications for use in light and power poles and substations.





Ritecase invests in local manufacturing with our facility located in Wingfield, South Australia. This allows us to meet the needs of our customers providing affordable, high-quality caissons and formwork with short lead times and to the specifications required for each project.

We also seek to source our raw material from local suppliers as much as possible, which means generally less risk to supply disruptions compared to our competitors.

Ritecase, utilising **RIB LOC®** technology is the all-weather, waterproof, and trusted circular & oval formwork, caissons and soakwells on the market.

FINISHES AVAILABLE

Structural - this will show a spiral line on the finished column.

Architectural - column forms lined with a rigid plastic sheet, providing a smooth finish to the concrete column.

REDUCES THE 'CRITICAL PATH' TIMELINE

Due to the ease of stripping, Ritecase formwork can be left on until the last moment. The use of Ritecase formwork reduces floor cycle time and cuts down the 'Critical Path' timeline on the project. Ritecase formwork allows pouring of floor slabs and support columns to the slab at the same time. Reduced labour costs equal reduced overall building costs

MADE TO MEASURE

Ritecase formwork can be used for in-situ, inground, above ground capable of heavy -duty applications. Ritecase formwork is produced in the diameter and length you require, meaning no wastage and incremental sizing. Ritecase formwork is produced in any diameter between 230mm to 2000mm, eliminating the need to 'go up one size' to accommodate a design.

READY TO GO ON SITE NEXT DAY

Exact lengths allow for a very short lead time, no cutting is required on site and Ritecase formwork is produced quickly to your specific requirements. Same or next day delivery to most metropolitan areas are available depending on order size.

EASE OF STRIPPING AFTER COLUMN IS FORMED

The engineered waxiness on Ritecase formwork does not require an oil application. Ritecase formwork is easy to strip. Simply using a Stanley knife or saw. It is the quickest disposable formwork to strip by cutting off in slabs or unwinding from the column.

RECYCLABLE PRODUCT

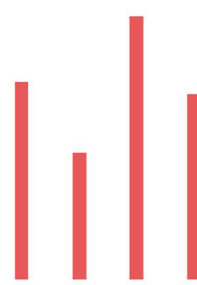
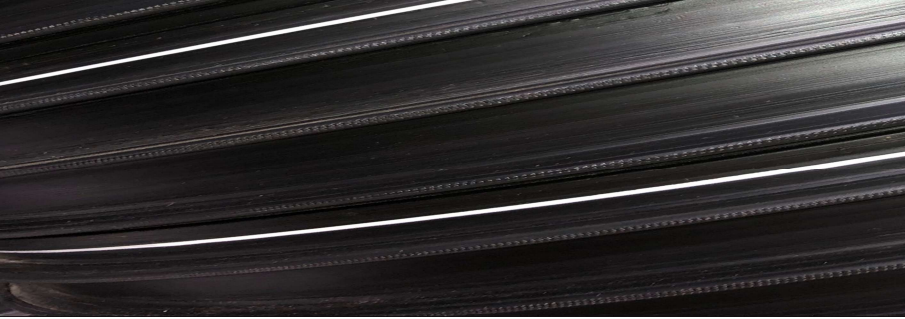
As we move to a more sustainable future Ritecase HDPE, and PVC can be recycled. This may assist your project in achieving specific sustainability targets. Ritecase also sources recycled raw material reducing our impact on the environment and furthering our ability to provide sustainable product.

LIGHT WEIGHT AND EASY TO HANDLE

The product is so light and easy to use that it is preferred by the people who handle it. Crane and excessive labour are seldom required to place Ritecase formwork. There are no razor-sharp edges when cut, making it easy to dispose of, and no dangerous/sharp scrap left on site.

ROBUST CONSTRUCTION

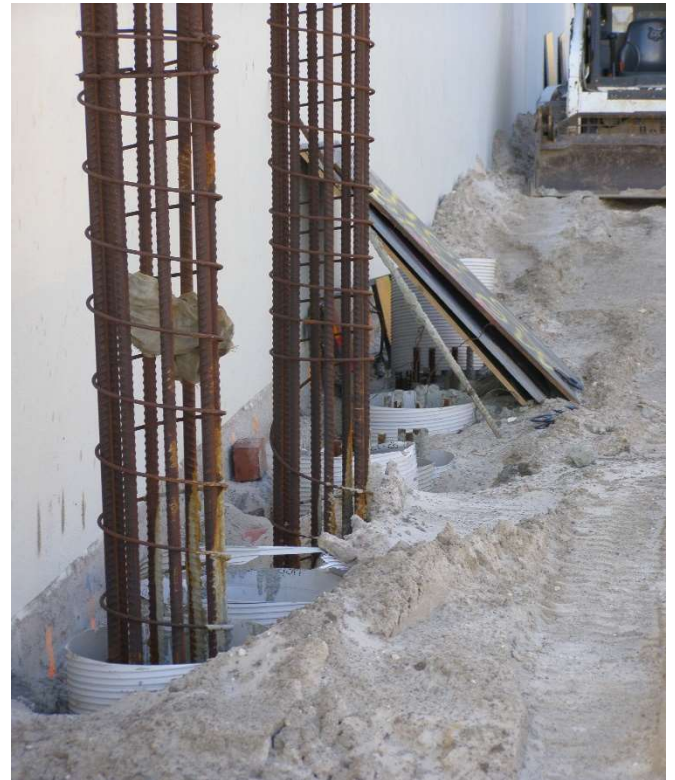
Ritecase formwork stands up to onsite conditions. It will resist knocking and denting from falling objects, is not affected by rain and can be manhandled about the site very easily.



RITECASE
CAISSONS - FORMWORK

Contact the Ritecase team today.

- High quality Australian made product.
- Custom solutions with short lead times.
- Reduce overall job and man hours per project.
- Safe and reliable industry proven product.
- 100% Waterproof.
- Contact the team for our Technical Product Guide for information on correct use.
- Excellent Customer Service



18 Cormack Road
Wingfield SA 5013

PH: 0407427191

PO Box 16
Mansfield Park
SA 5012

www.ritecase.com.au



ABN: 23 630 636 725